

## FASP Single Swivel Fitting Sprinter/LT35 Pre 2006.

Part number 1305.4116 DX = Driver SX = Passenger

It is recommended that all items supplied by Jennings Seats are installed by a qualified and competent professional.

If you have any questions regarding the installation of the products supplied, please call 01270 257417.

With each swivel you should have the following:

X4 M8 20mm Countersunk Bolt

X4 M8 20mm Hex Head Bolt

X6 Nyloc Nuts

X6 M8 Washers

X1 Handbrake lowering bracket, X1 countersunk bolt, X1 dome headed bolt, X1 nyloc nut. (Driver side only).

- Before starting work on the vehicle, ensure that the vehicle cannot move whilst being worked on. i.e have the vehicle on a workshop ramp or the wheels chocked and the vehicle in gear.
- Slide the seat all the way forwards, this will expose the bolts holding the seat sliders in position. Undo the rear bolts.

- Slide the seat all the way backwards. Remove the front bolts.
- Check for any electrical plugs and disconnect.
- Remove the seat from the vehicle. On some vehicles you have to pull the seat towards you before pulling up as it is locked in position.
- Once the seat is removed, you should have clear access to the top of the seat base frame, which has six threaded holes in the top face.
- Offer the swivel up to the top face of the base box. The swivel should be orientated with the orange lever pointing towards the centre of the vehicle (pictures on other sheet supplied).
- Rotate the swivel 45 degrees to expose the holes in the bottom plate (ensure the swivel is not going to be dropped when doing this!).
- With access to the holes in the bottom plate of the swivel, at the rear use x2 of the M8 20mm countersunk bolts provided.
- Use x2 of the original bolts you take out of the slider for the front.
- With the remaining x2 bolts removed from the slider, use them and x2 washers to bolt the swivel to the remaining x2 holes in the base box.
- Install the bolts in a diagonally opposite pattern and tighten by equal measure, incrementally, in the same pattern.

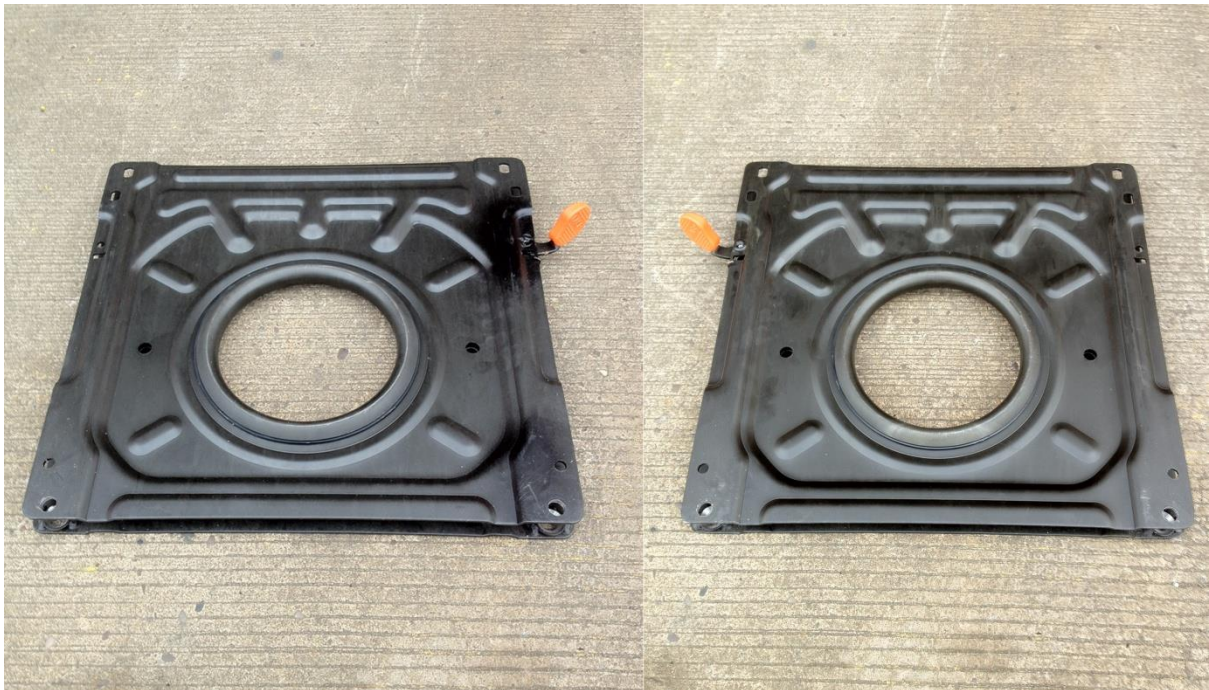
- The swivel should now be secured to the base frame.
- Install the remaining x2 20mm countersunk bolts in the rear top plate of the swivel.
- Use the x4 M8 20mm hex head bolts provided along with the remaining x4 washers and place into the holes of the top plate of the swivel, with the head facing down and the thread into the track of the slider.
- Install the nuts on the bolts in the slide track.
- Install these bolts in the same diagonal method as previous. Fasten securely.
- Re-fit any electrical connectors and the seatbelt, if removed.
- Double check all fastenings are secure. Refer to the workshop manual for any torque figures required.
- The seat may need to be lifted into the high position in order to rotate.
- The handbrake normally needs to be in the off/down position to spin. Again, ensure the vehicle cannot move before disengaging the handbrake.
- The driver's side swivel for the Sprinter requires the handbrake to be remounted in a lower position in order for the seat to rotate.
- Please see the corresponding handbrake lowering instructions.
- You may find that the plastic covers on the seat base may need trimming to suit.

## FRONT OF THE VEHICLE

- The Orange handle should point towards the front and centre of the vehicle, and pointing upwards. (As picture shows)
- The large centre circle of the swivel should be off centre towards the rear of the vehicle.
- The swivels rotate towards the centre of the vehicle (Clockwise for the passenger's side and Anti clockwise for the driver's side).
- The best way to fit them is to swivel the plate so there is access to the bottom plate holes then bolt the bottom of the swivel to the top of the base box/frame then bolt the seat and runners to the top of the swivel.

PASSENGER'S SIDE

DRIVER'S SIDE



## BACK OF THE VEHICLE